

**PBS-Kansas: Enhancing Systems to Improve
Quality of Life for All Kansans**



9th International Conference on
Positive Behavior Support
Atlanta, Georgia
March 16, 2012

Matt Enyart, Kelcey Schmitz, and Nan Perrin
University of Kansas



Mission and Vision Statement

PBS-Kansas Mission Statement

The PBS-Kansas (PBS-KS) initiative promotes the use of proactive evidence-based strategies to meet the social and emotional needs of all Kansans by partnering across systems to enhance behavioral expertise and use new and existing resources in an efficient, effective manner.

PBS-Kansas Vision Statement

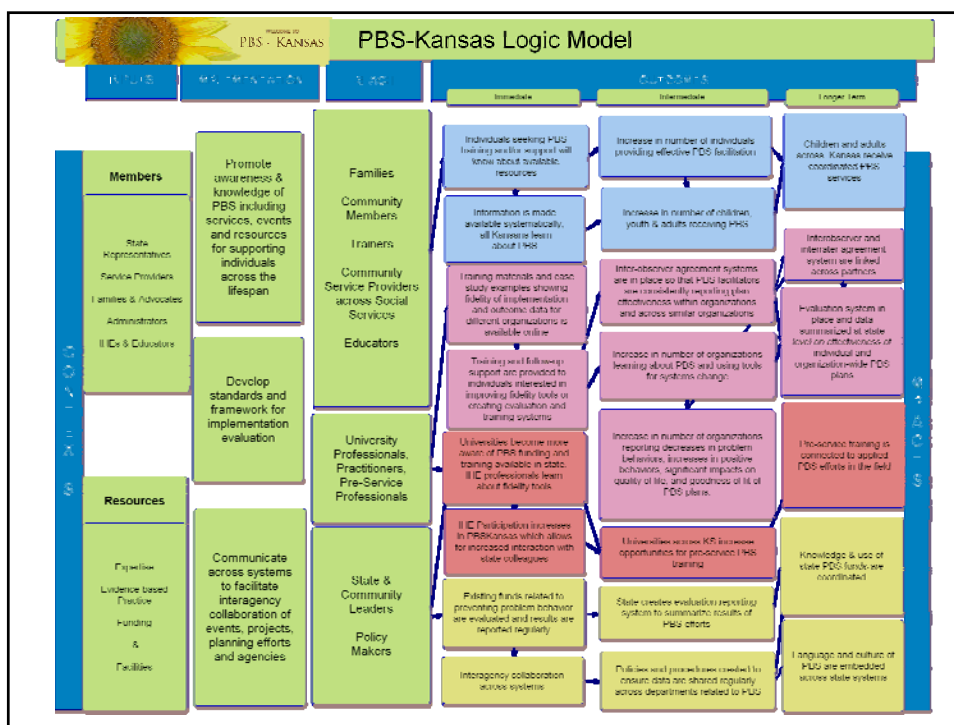
Healthy relationships built by Positive Behavior Support (PBS) will enhance quality of life across the life span.

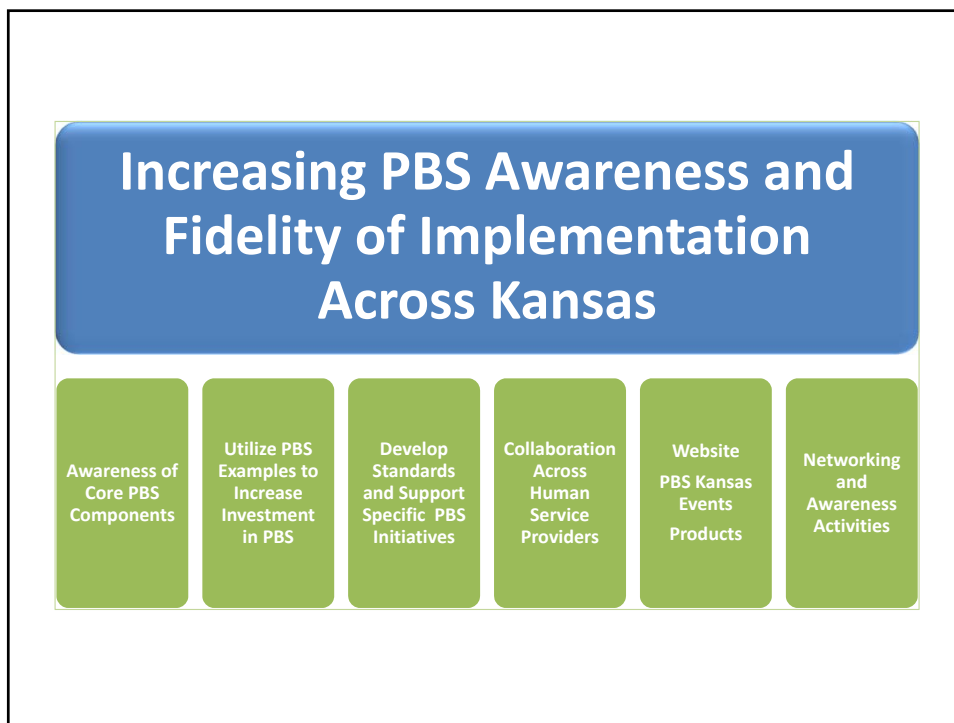
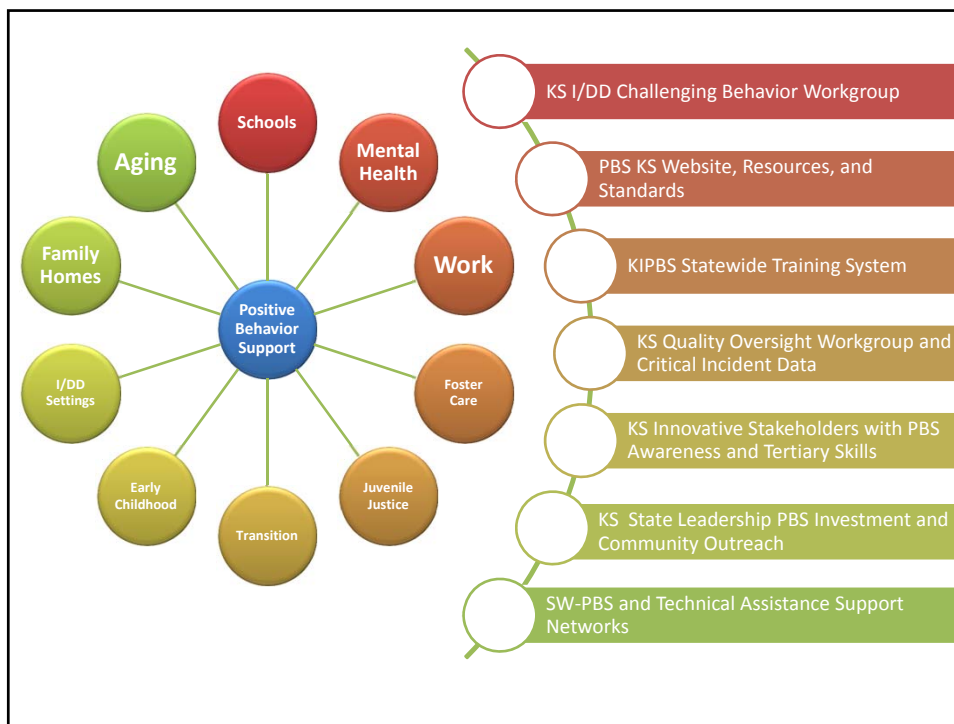




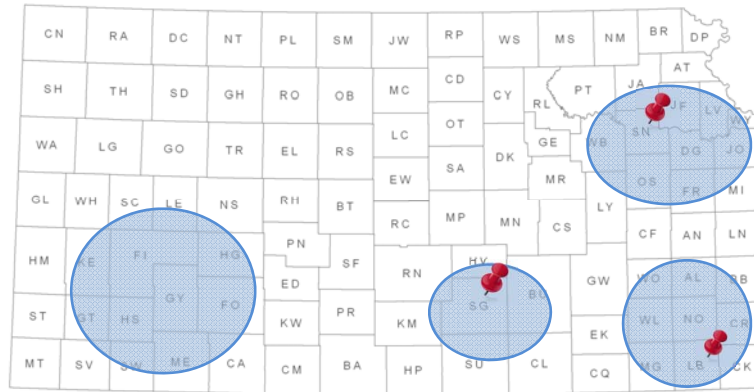
History and Purpose

- **PBS-Kansas was established in 2005 as an APBS Network and continues to be a loosely affiliated group of individuals interested in networking and supporting the expansion of positive behavior support (PBS) across the state.**
- **The purpose of PBS-Kansas is to maximize and create a collaborative network of professionals to increase consistency, maximize resources, and make PBS a high visibility topic area in Kansas.**
- **The group is committed to systems change efforts across the life span and human service populations.**





Kansas Map of Statewide PBS Activities



PBS-Kansas Main and Distance Meeting Sites



Includes Multiple PBS Activities such as PBS Regional Planning, KIPBS Facilitation, SW-PBS, and Pyramid Model/Early Childhood

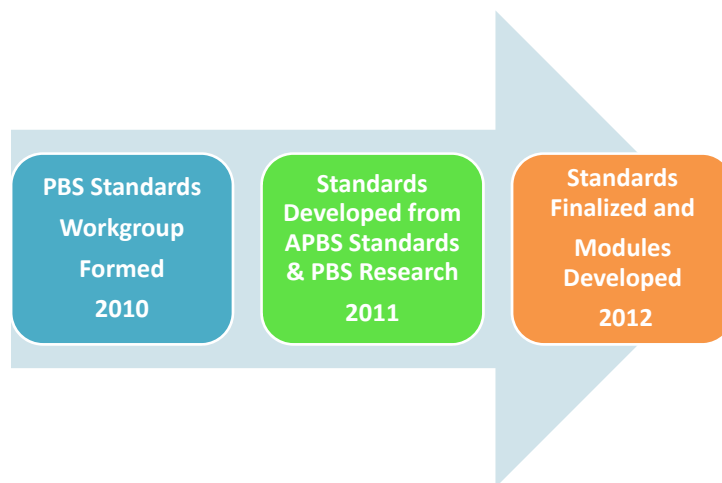
Fast Facts

- PBS-Kansas Meets 6 Times/Year
- Approximately 20 Members Attend
- 2 Distance Sites
- 2 Co-Facilitators Lead Meetings
- More than 100 PBS Kansas Members

Kansas PBS Tertiary Standards Development

PBS Standards Workgroup Participants

- Community I/DD Organizations
- Child Welfare/Foster Care Provider
- Disability Rights Center
- Mental Health Managed Care Provider
- Parent Information and Training Resource Center
- BCBA and PBS Practitioners
- Statewide PBS Training System
- University of Kansas
- Regional I/DD Administration Organizations
- Parent of a Child with a Disability
- State Quality Assurance
- State HCBS Waiver Management



Sample PBS-Kansas Meeting Agenda

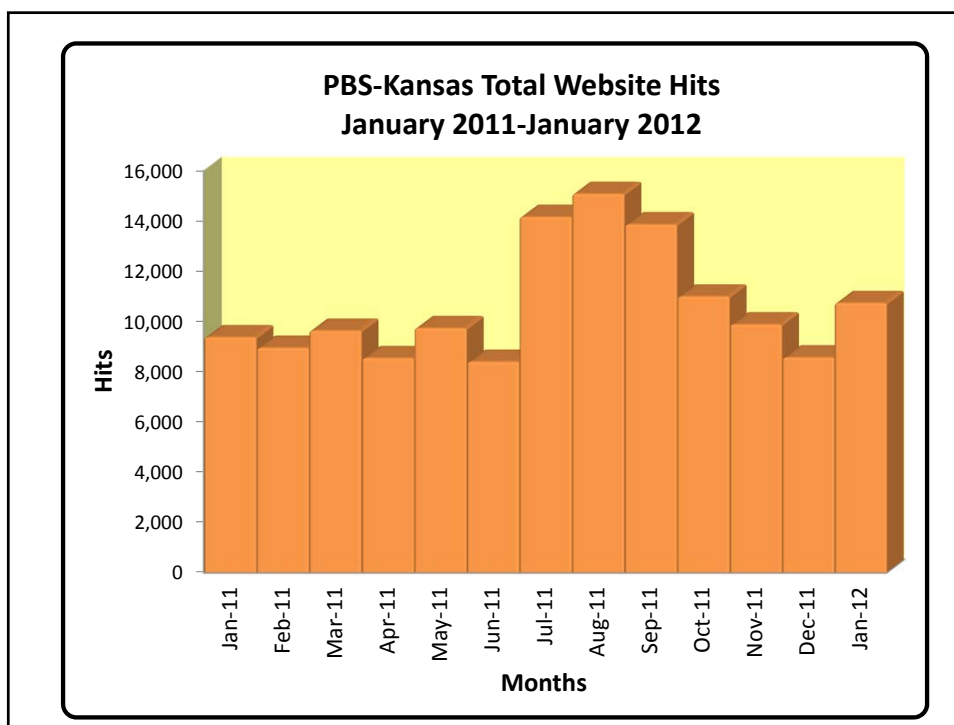
- Introductions and Announcements
- PBS Awareness and PBS Kansas History
- PBS Kansas Action Plan Review
- Standards Development Workgroup Update
- State of the State, Kansas Disability Rights Center
- APBS Update
- Break and Reinforcement Activities
- Sunflower Hour of Power: Positive Behavior Employment Support Pilot
- Action Planning Feedback from PBS Kansas Members
- Collection of Testimonials and Resources for Website
- Suggestions for Next Sunflower Hour of Power Presentation & Next Meeting Date/Time

2011 Sunflower PBS Hour of Power Presentations

- College of Direct Supports
- Rainbows United
- Sedgwick County CDDO
- Disability Rights Center
- Families Together



www.pbskansas.org





Artwork by Rachel Freeman